

FIG. 1

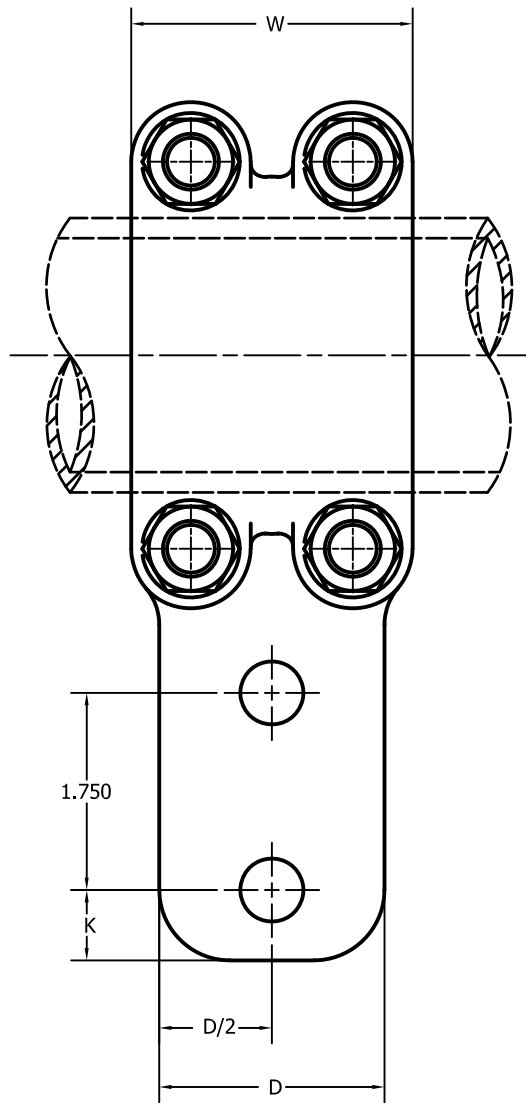


FIG. 2

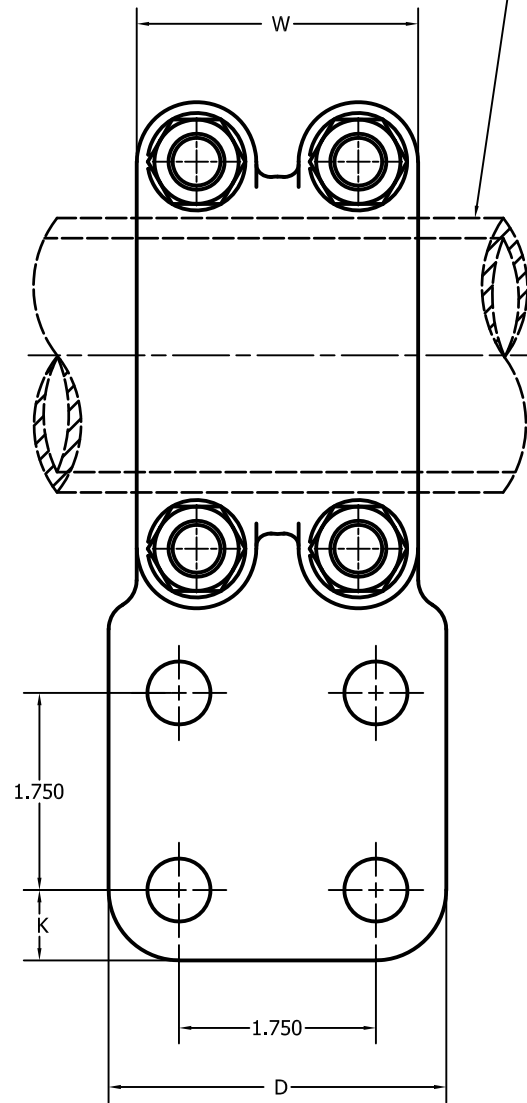
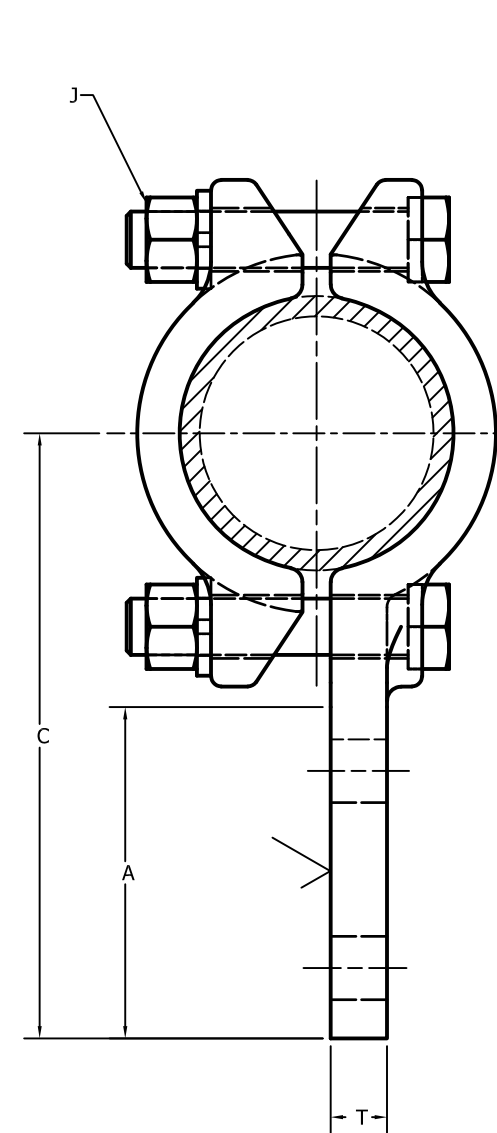


FIG. 3



NOTES:

1. MATERIALS: CASTINGS: 123 ALLOY  
HARDWARE : STAINLESS STEEL OR SILICON BRONZE
2. FOR SILICON BRONZE HARDWARE, ADD "ED" SUFFIX TO CATALOG NUMBER (EX: TTF-0420-1-ED)
3. ALL HOLES IN TONGUE ARE Ø.563.
4. FOR TIN PLATED BODY AND CAP, ADD "TP" SUFFIX TO CATALOG NUMBER (EX: TTF-0420-1-TP)

MR-3433-98


|  |            |        |          |
|--|------------|--------|----------|
| 73565  | 03/28/2018 | VV     | HG       |
| EC #   | DATE       | CHG BY | RESP ENG |
| DESC OF DWG:<br>DRAWING CREATED IN AUTOCAD<br>CHANGED ALLOY TO 123               |            |        |          |
| REASON (S) FOR CHANGE: ADDED NOTE 2 AND ADDED TO NOTE 1<br>DISPOSITION OF MAT'L: |            |        |          |

HPS

CONFIDENTIAL: THIS DRAWING AND ITS CONTENTS ARE CONFIDENTIAL AND THE EXCLUSIVE PROPERTY OF HUBBELL POWER SYSTEMS. NO PUBLICATION, DISTRIBUTION OR COPIES MAY BE MADE WITHOUT THE WRITTEN CONSENT OF HUBBELL POWER SYSTEMS. HUBBELL POWER SYSTEMS UNPUBLISHED ALL RIGHTS RESERVED UNDER THE COPYRIGHT LAWS

|                                       |                           |  |                        |
|---------------------------------------|---------------------------|--|------------------------|
|                                       |                           |  |                        |
| <b>HUBBELL® POWER SYSTEMS</b>         |                           |  |                        |
| <b>TEE CONNECTOR<br/>TUBE TO FLAT</b> |                           |  |                        |
| SIZE<br><b>C</b>                      | DWG NO.<br><b>C-12981</b> | CAT / PART / ASSY NO.<br><b>TTF- (SEE TABLE)</b> | REV<br><b>07</b>       |
| DO NOT SCALE THIS DRAWING             | DRN BY<br><b>HDI</b>      | DATE<br><b>3/1/84</b>                            | SHEET<br><b>1 OF 2</b> |

| CATALOG NUMBER | FIG. NO. | IPS MAIN | DIMENSION IN INCHES |       |       |      |       |      |       |
|----------------|----------|----------|---------------------|-------|-------|------|-------|------|-------|
|                |          |          | A                   | C     | D     | J    | K     | T    | W     |
| TTF-0410-1     | 1        | 1/2"     | 3.250               | 4.375 | 1.000 | .375 | .625  | .250 | 2.000 |
| TTF-0420-1     | 1        | 1/2"     | 3.250               | 4.375 | 2.000 | .375 | .625  | .250 | 2.000 |
| TTF-0430-1     | 3        | 1/2"     | 3.250               | 4.875 | 3.000 | .500 | .625  | .250 | 2.500 |
| TTF-0610-1     | 1        | 3/4"     | 3.250               | 4.875 | 1.000 | .500 | .625  | .375 | 2.000 |
| TTF-0620-1     | 2        | 3/4"     | 3.125               | 4.625 | 2.000 | .500 | .625  | .375 | 2.500 |
| TTF-0630-1     | 3        | 3/4"     | 3.250               | 4.875 | 3.000 | .500 | .625  | .375 | 2.500 |
| TTF-1010-1     | 1        | 1"       | 3.250               | 5.000 | 1.000 | .500 | .625  | .375 | 2.625 |
| TTF-1020-1     | 1        | 1"       | 3.125               | 4.750 | 2.000 | .500 | .625  | .375 | 2.625 |
| TTF-1030-1     | 3        | 1"       | 3.125               | 4.875 | 3.000 | .500 | .625  | .375 | 3.750 |
| TTF-1220-1     | 2        | 1 1/4"   | 3.250               | 5.000 | 2.000 | .500 | .625  | .375 | 2.250 |
| TTF-1230-1     | 3        | 1 1/4"   | 3.250               | 5.188 | 3.000 | .500 | .625  | .375 | 2.500 |
| TTF-1240-1     | 3        | 1 1/4"   | 4.125               | 6.125 | 4.000 | .500 | 1.125 | .375 | 2.750 |
| TTF-1420-1     | 1        | 1 1/2"   | 3.250               | 5.375 | 2.000 | .500 | .625  | .375 | 1.750 |
| TTF-1430-1     | 3        | 1 1/2"   | 3.125               | 5.125 | 3.000 | .500 | .625  | .375 | 2.750 |
| TTF-1440-1     | 3        | 1 1/2"   | 4.125               | 6.125 | 4.000 | .500 | 1.125 | .375 | 2.750 |
| TTF-2020-1     | 2        | 2"       | 3.125               | 5.375 | 2.000 | .500 | .625  | .500 | 2.500 |
| TTF-2030-1     | 3        | 2"       | 3.125               | 5.375 | 3.000 | .500 | .625  | .375 | 2.500 |
| TTF-2040-1     | 3        | 2"       | 4.125               | 6.500 | 4.000 | .500 | 1.125 | .375 | 2.750 |
| TTF-2430-1     | 3        | 2 1/2"   | 3.250               | 5.875 | 3.000 | .500 | .625  | .500 | 2.750 |
| TTF-2440-1     | 3        | 2 1/2"   | 4.125               | 6.625 | 4.000 | .500 | 1.125 | .500 | 2.750 |
| TTF-3030-1     | 3        | 3"       | 3.125               | 6.375 | 3.000 | .625 | .625  | .500 | 3.500 |
| TTF-3040-1     | 3        | 3"       | 4.250               | 7.438 | 4.000 | .625 | 1.125 | .500 | 3.500 |
| TTF-3430-1     | 3        | 3 1/2"   | 3.250               | 6.563 | 3.000 | .625 | .625  | .500 | 3.500 |
| TTF-3440-1     | 3        | 3 1/2"   | 4.125               | 7.375 | 4.000 | .625 | 1.125 | .500 | 3.500 |
| TTF-4040-1     | 3        | 4"       | 4.125               | 7.750 | 4.000 | .625 | 1.125 | .625 | 4.000 |
| TTF-4030-1     | 3        | 4"       | 3.250               | 7.000 | 3.000 | .625 | .625  | .625 | 4.000 |
| TTF-6040-1     | 3        | 6"       | 4.125               | 9.000 | 4.000 | .625 | 1.125 | .500 | 4.000 |

|  |            |        |          |  |  |                              |                               |   |                 |
|--|------------|--------|----------|--|--|------------------------------|-------------------------------|---|-----------------|
| 73565  | 03/28/2018 | VV     | HG       | HPS  |  HUBBELL® POWER SYSTEMS, INC. | HUBBELL® POWER SYSTEMS       |                               |   |                 |
| EC #   | DATE       | CHG BY | RESP ENG |  |  | TITLE                        | TEE CONNECTOR<br>TUBE TO FLAT |   |                 |
| DESC OF DWG:<br>DRAWING CREATED IN AUTOCAD<br>CHANGED ALLOY TO 123 |            |        |          | CONFIDENTIAL: THIS DRAWING AND ITS<br>CONTACTS ARE CONFIDENTIAL AND THE<br>EXCLUSIVE PROPERTY OF HUBBELL POWER<br>SYSTEMS. NO PUBLICATION,<br>DISTRIBUTION OR COPIES MAY BE MADE<br>WITHOUT THE WRITTEN CONSENT OF<br>HUBBELL POWER SYSTEMS.<br>HUBBELL POWER SYSTEMS UNPUBLISHED<br>ALL RIGHTS RESERVED UNDER THE<br>COPYRIGHT LAWS |  | SIZE<br>C                    | DWG NO.<br>C-12981            | CAT / PART / ASSY NO.<br>TTF- (SEE TABLE) | REV<br>07       |
| REASON (S) FOR CHANGE:<br>DISPOSITION OF MAT'L:                    |            |        |          |  |  | DO NOT SCALE<br>THIS DRAWING | DRN BY<br>HDI                 | DATE<br>3/1/84                            | SHEET<br>2 OF 2 |